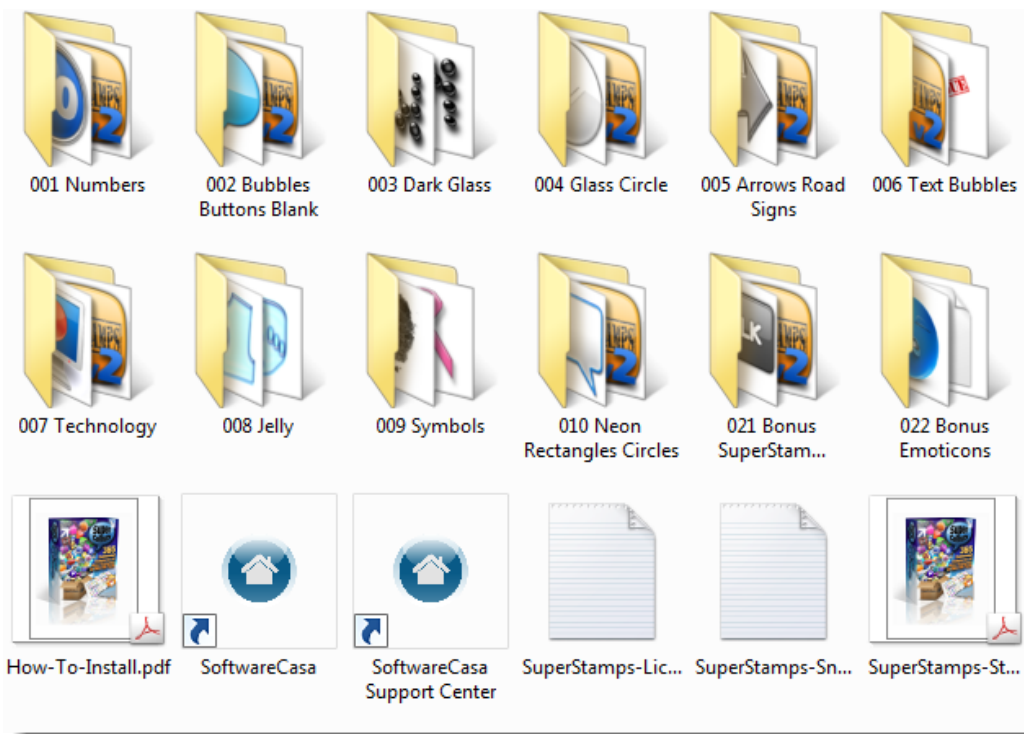


# Tutorial: How to use SuperStamps in Snagit



After downloading the file Double-click to unzip it. Your unzipped folder will include these documents/folders (see image on left hand side).

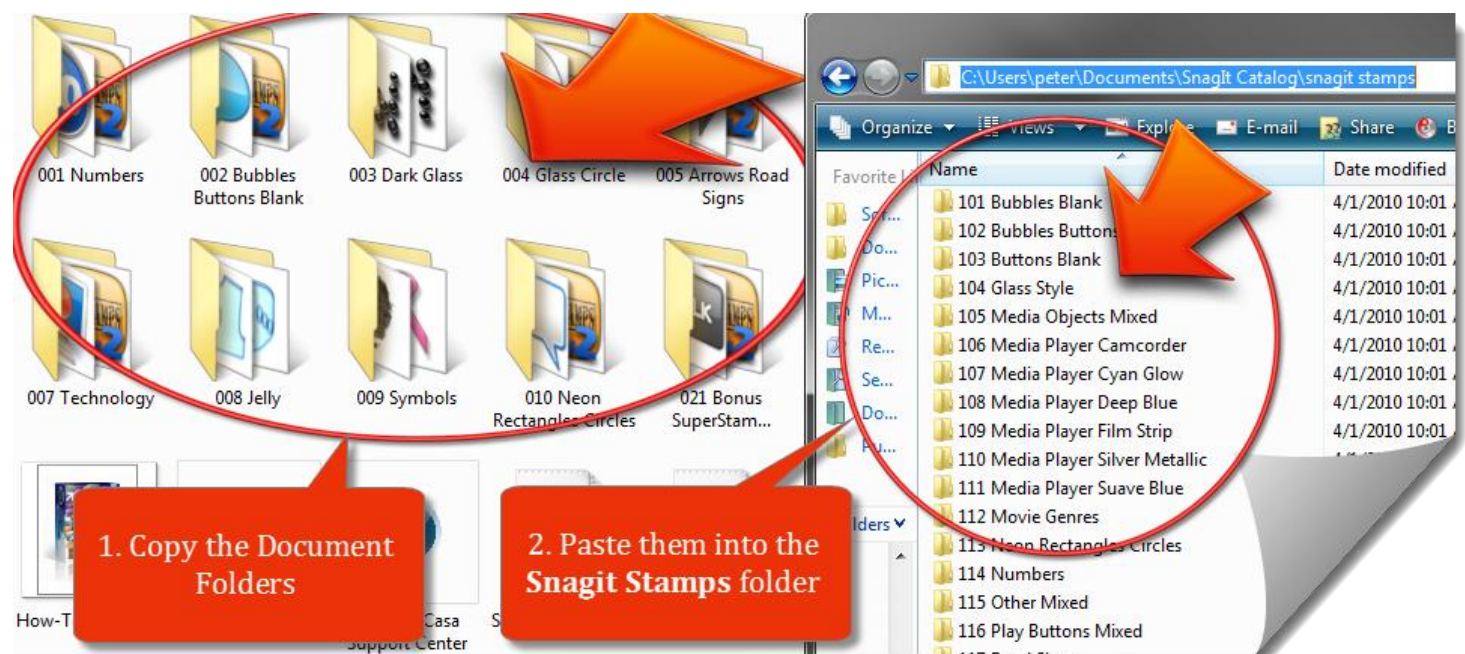
The numbered folders contain your Stamps. Simply copy these folders into the folder where you store your Snagit Stamps. This is normally located here:

C:\Users\Your-User-Name\Documents\Snagit Catalog\snagit stamps\

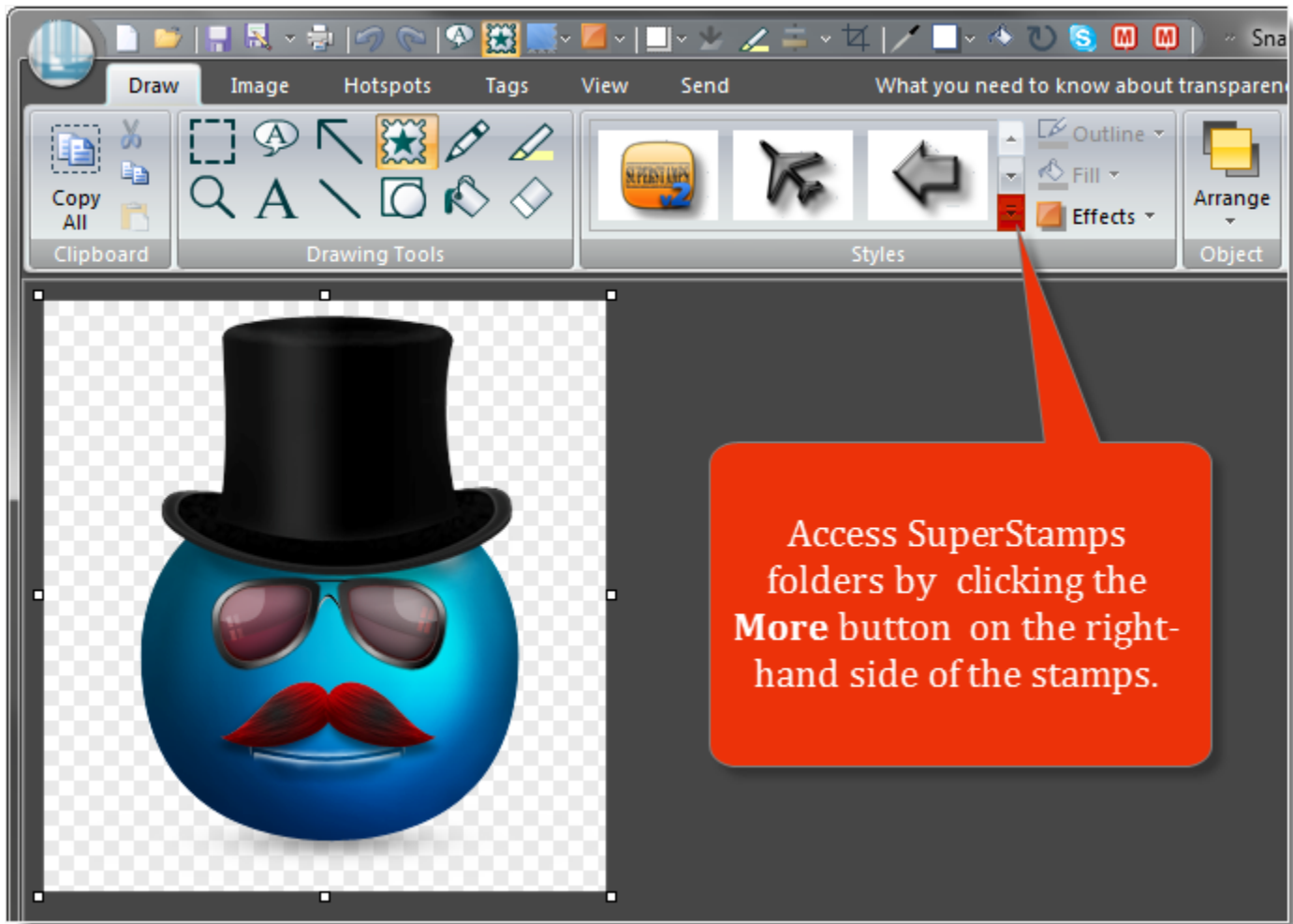
If you have problems locating your stamps folder, see section 2 in this document.

Snagit Stamps do not support folder in folder so do not copy the folder with the folders, **but each folder** containing the graphic files.

Copy the documents over from the SuperStamps folder to the Snagit Stamps folder:



After you have copied them into the **Snagit Stamps folder** you will be able to access them directly from inside the **Snagit Editor**.



# How to locate your Snagit Stamps folder

If you have trouble locating your Stamps folder, please follow these steps. Open the Snagit Editor.

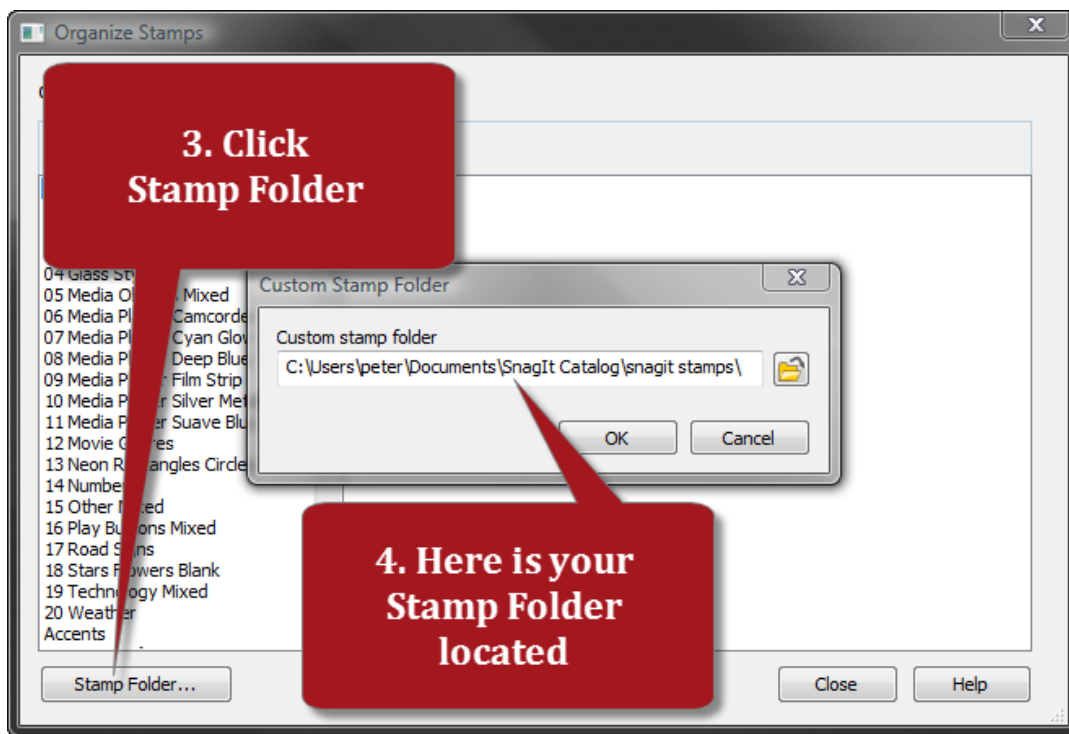


1. Choose **Draw/**  
**Stamps**

2. Open **Organize**  
**Stamps**

3. Click on the **Stamp**  
**Folder**

4. See the **file path**  
and **name** of your  
Stamp Folder.



3. Click  
Stamp Folder

4. Here is your  
Stamp Folder  
located